

Insider Extra 1

ASP Self-Diagnosis Web Page

This Insider Extra describes a Web page that gathers and reports a variety of Web server information that affects the operation of Microsoft Office FrontPage 2003. This can be very useful for determining which FrontPage features your server supports, or for diagnosing problems. This explains the name: Self-Diagnosis Web Page.

Because this is an ASP page, it will work only on Microsoft Web servers, and only if your Web site has script permissions (that is, if it can run ASP pages.) The Microsoft FrontPage Server Extensions need not be present.

Caution Because Microsoft Windows SharePoint Services blocks execution of ASP pages, this Insider Extra won't run in that environment. To gather comparable information, you'll need to contact the server's administrator.

The ASP Self-Diagnosis Web Page gathers information in a variety of ways, including:

- Inspecting files within your Web site
- Reading values from the Web server's registry
- Loading and running various ActiveX objects

None of this is terribly intrusive; every day, ordinary ASP pages and other routine processes access the same information that the ASP Self-Diagnosis Web Page does. Nevertheless, it's possible that the ASP Self-Diagnosis Web Page might falsely report some information as blank or missing because of security settings on your server. If you suspect this is occurring, contact your server's administrator.

Running the ASP Self-Diagnosis Web Page

To run the ASP Self-Diagnosis Web Page on your server, follow these steps:

- 1 Install the Insider Extra Web site from the Companion CD. The Sample Files setup program installs this site at [My documents]\Microsoft Press\FrontPage 2003 Inside Out\fp1\extras.
- 2 Copy the selfdiagasp/selfdiag.asp page into your Web site on the server in question.
- 3 Browse the selfdiag.asp page from the server location where you copied it. Figure IE1-1 shows some typical results.

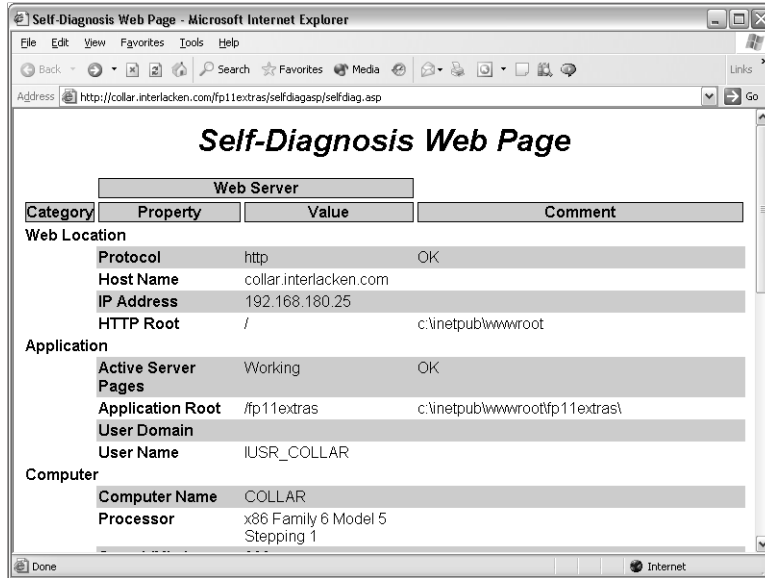


Figure IE1-1. This Web page displays a variety of information that's useful for diagnosing the operation of a FrontPage-based Web site.

Tip Secure Your Self-Diagnosis Information

Don't let copies of the Self-Diagnosis Web Page remain on your public Web site where hackers and other mischief-makers can find it. The more information you give these people, the more problems you'll have.



On the CD To retrieve similar information from the viewpoint of an ASP.NET page, refer to Insider Extra 2, "ASP.NET Self-Diagnosis Web Page."

Interpreting Self-Diagnosis Information

This section explains all the information that the ASP Self-Diagnosis Web Page provides.

Web Location

This group of values reports the Web server's location:

- **Protocol** This field identifies the network protocol you used to access the Web page. Correct values are *http* and *https*. If the protocol is *file*, the page will display an error message in the Comment column, warning you that because you're loading the page directly from disk, the ASP code can't possibly run.
- **Host Name** This field reports the host name you specified in the URL that accessed the ASP Self-Diagnosis Web Page.

ASP Self-Diagnosis Web Page

- **IP Address** This field reports the server's network address.
- **HTTP Root** The Value column always displays a slash (/), which is always the location of the server's HTTP root. The Comment column shows the corresponding location in the Web server's file system, such as c:\inetpub\wwwroot.

Application

This group of values reports information about the Web application that contains the ASP Self-Diagnosis Web Page:

- **Active Server Pages** This value should always be *Working*. If it's blank, ASP pages aren't working, and most other values on the page will be blank as well.
- **Application Root** The Value column displays the starting URL of the current IIS application. If this value doesn't equal the URL of your FrontPage-based Web site, database connections and other features that depend on the global.asa file are unlikely to work. The Comment column displays the corresponding physical path.
- **User Domain** This field reports the Windows domain in which the current user account resides. If it's blank, ASP pages are running under the authority of a local account on the Web server.
- **User Name** This field shows the name of the user account under which ASP pages are running. This determines the security privileges that Windows allots to your ASP pages.

Computer

This group of values reports information about the computer where the Web server is running:

- **Computer Name** This is the Windows name of the entire computer (that is, the name you would see on the Computer Name tab of the System Properties Control Panel applet).
- **Processor** This field reports the manufacturer's model identification for the first CPU in the server.
- **Speed (MHz)** This field reports the server's approximate CPU speed in MHz.

Software

This group of values reports the presence and version numbers of several kinds of software running on the Web server:

- **Operating System** This field reports the operating system that the server is running.
- **CSD Version** This field reports the service pack or other release level that the server is running.
- **Web Server Software** This field reports the name and version of the Web server software.

Microsoft Office FrontPage 2001 Inside Out

- **VBScript Version** This field reports the version of VBScript installed on the server, and therefore the version available to ASP pages.
- **ADO Version** This field reports the version of ADO installed on the server and available to ASP pages. ASP pages use ADO to access databases.
- **MDAC Version** This field reports the most recent version of the Microsoft Data Access Components (MDAC) installed on the server. This is a collection of database drivers including, but not limited to, ADO.
- **ListSystemDSNs** If this field is not available or non-zero, the server's Open Database Connectivity (ODBC) software will supply a list of System Data Source Names (DSNs) on demand.

If this field is 0, no such list is available. Administrators sometimes choose this value because if the list is available, it includes all System DSN's on the server, whether or not they belong to the current site. Suppressing the list makes it harder for the operator of one site to guess the location of another site's databases.

This setting affects FrontPage after you take these actions:

- 1 Choose Site Settings from the Tools menu.
- 2 Click the Database tab.
- 3 Click the Add button. This displays a New Database Connection dialog box.
- 4 Select System Data Source On Web Server.

At this point, if ListSystemDSNs value is Not Detectable or non-zero, you can click the Browse button and choose the DSN you want from a list.

If the ListSystemDSNs value is 0, the Browse option and the Name text box in the New Database Connection dialog box will be dimmed. Your options in this case are:

- Create the database connection some other way. For example, select the Custom Definition option, click the Advanced button, type a connection string in the Connection string field, and then click OK and verify.
- Ask the server's administrator to change the ListSystemDSNs value for you. The full registrykey is HKEY_Local_Machine\Software\Microsoft\Shared Tools\Web Server Extensions\All Ports>ListSystemDSNs.

FrontPage

This group of values provides information about the FrontPage Server Extensions:

- **Server Extensions** This field reports the version of the FrontPage Server Extensions installed on the server or reports Absent if the server extensions don't appear to be installed.
- **Current Web** This field reports the root folder location of the current FrontPage-based Web site.

If your Web site contains any FrontPage database connections, any ASP pages that rely on the global.asa file, or any ASP.NET pages, this value and the Application Root value

ASP Self-Diagnosis Web Page

should be equal. If they're not, try adding a FrontPage database connection to your Web site. If that doesn't solve the problem, ask the server's administrator to flag your Web site as an IIS application.

Indexing Service

This group of values provides information about Microsoft Indexing Service. The presence or absence of this service affects the way the FrontPage Web Search component works.

If Indexing Service is present, all Web Search components in all virtual servers on the computer will try to use it. This holds true even if Indexing Service isn't running, or if it's running but has no catalog that includes your site. In these latter cases, your search will, of course, produce no results.

If Indexing Service isn't present, all Web Search components will use the WAIS search engine that comes with the FrontPage Server Extensions.

There is, however, one exception to these rules. If Indexing Service is present but a registry value named *NoIndexServer* equals *1*, all Web Search components will use the WAIS search engine (as if Indexing Service weren't present).

For more information about diagnosing problems with the Web Search component, refer to the Troubleshooting Sidebar "Search Component Returns No Results," on page 740.

- **Indexing Service** This field displays one of four possible values:
 - **Unavailable** Means that Indexing Service doesn't seem to be installed.
 - **Installed** Means that Indexing Service seems to be installed but that the ASP Self-Diagnosis Web Page can't determine its status.
 - **Running** Means that Indexing Service is installed and running.
 - **Stopped** Means that Indexing Service is installed but not running.
- **Indexing Service Startup** This field displays one of four possible values:
 - **Not Detectable** Means that the ASP Self-Diagnosis Web Page can't determine when Indexing Service will start. This usually means that Indexing Service isn't installed.
 - **Automatic** Means that Indexing Service will start automatically every time the server boots.
 - **Manual** Means that Indexing Service will start only when an administrator issues a command.
 - **Disabled** Means that Indexing Service will never start.
- **NoIndexServer** This field reports the value of a registry entry that overrides the normal logic for using Indexing Service:
 - If this value is *1*, all FrontPage Web Search components will use the FrontPage search engine even if Indexing Service is present.

Microsoft Office FrontPage 2001 Inside Out

- If this value is Not Detectable, the *NoIndexServer* registry value is probably absent. In this case, if Indexing Service is installed, Web Search components will use it.
- If this value is anything else, all FrontPage Web Search components will use Microsoft Indexing Service, even if Indexing Service isn't running or has no catalog for the Web site that contains the Web search component.



On the CD

To perform further testing on Microsoft Indexing service, try Insider Extra 7, "Scripting Web Searches."

E-Mail

This heading reports the status of an object named *CDONTS.NewMail*. ASP and ASP.NET pages frequently use this object to send e-mail.

- **CDO Version** If this value is Unavailable, the *CDONTS.NewMail* object is either not installed or inaccessible because of security restrictions. If a version number appears, the given version of the object is available for use.

Note that for ASP pages to successfully send mail, the Microsoft SMTP Service must also be properly configured and running.

XML Objects

This group of values reports the status of two objects that ASP pages use to read and parse XML files:

- **XMLHTTP** This value reports the status of an object named *Microsoft.XMLHTTP*:
 - If this value is Installed, the object is present, but the ASP Self-Diagnosis Web Page can't determine its version.
 - If this value is a version number, the given version of the object is installed.
 - If this value is Unavailable, the object probably isn't installed. However, it might be installed with security restrictions that prevent its use.
- **ServerXMLHTTP** This value reports the status of an object named *MSXML2.ServerXMLHTTP*. This object works very much like the *Microsoft.XMLHTTP* object but has better performance within ASP pages.

The values for this object parallel those for the *Microsoft.XMLHTTP* object.

Database Connections

This heading identifies a list of all FrontPage database connections defined in the current Web site. The properties of each database connection appear as ODBC connection strings. To add or remove entries from this list, open the site in FrontPage, choose Site Settings from the Tools menu, and then click the Database tab.